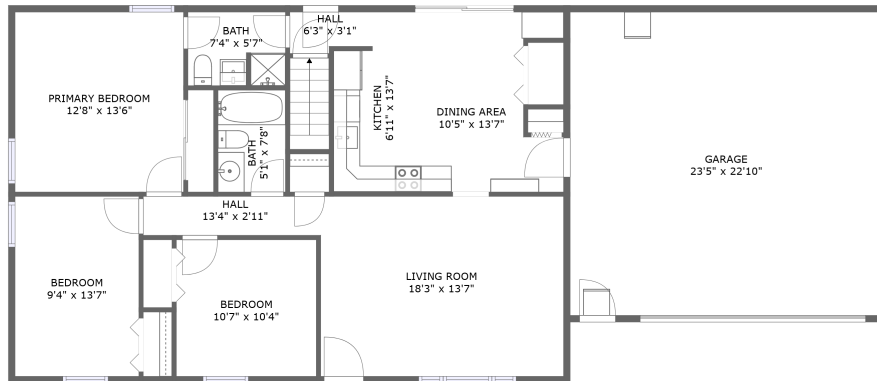
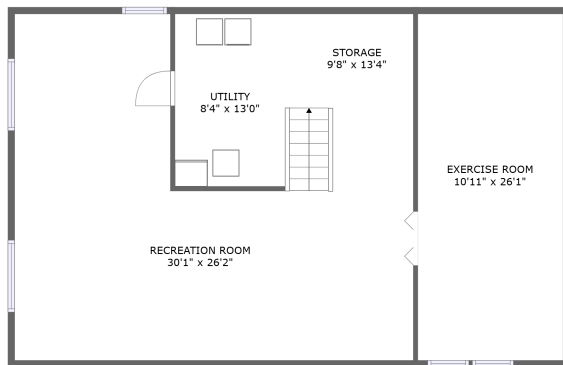


68846 Claire Street, Edwardsburg, Cass County, Michigan, United States, 49112




FLOOR 2



FLOOR 1

Property summary

 **1** Garages

 **3** Bedrooms

 **2** Bathrooms

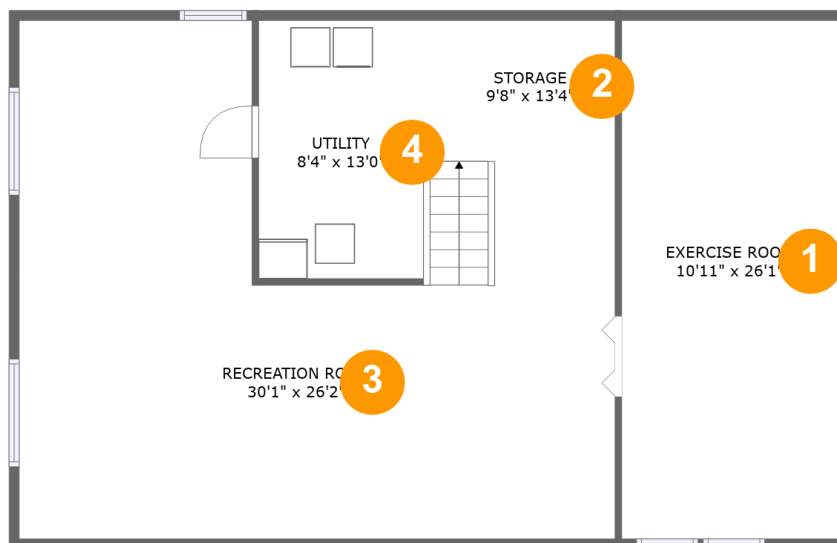
 **0** Half baths

 **2** Floors

 **1,205** Gross living area sqft

 **2,926** Total sqft

**68846 Claire Street, Edwardsburg, Cass County,
Michigan, United States, 49112**



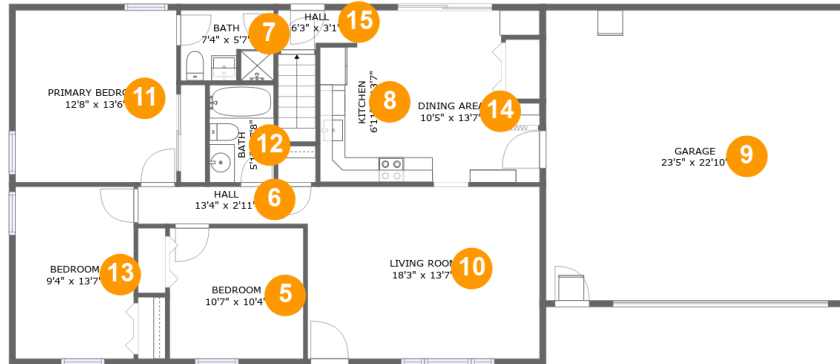
Room dimensions

Floor 1

Total sqft: 1151 Living area: 0

#		Dimensions	sqft	Counted as living area
1	Exercise Room	10'11" x 26'1"	286 sq. ft	No
2	Storage	9'8" x 13'4"	129 sq. ft	No
3	Recreation Room	30'1" x 26'2"	541 sq. ft	No
4	Utility	8'4" x 13'0"	108 sq. ft	No

68846 Claire Street, Edwardsburg, Cass County, Michigan, United States, 49112



Room dimensions

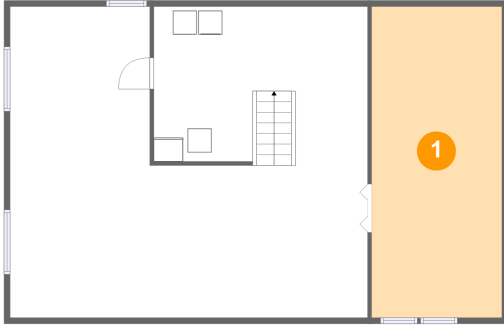
Floor 2

Total sqft: 1775 Living area: 1205

#		Dimensions	sqft	Counted as living area
5	Bedroom	10'7" x 10'4"	109 sq. ft	Yes
6	Hall	13'4" x 2'11"	39 sq. ft	Yes
7	Bath	7'4" x 5'7"	40 sq. ft	Yes
8	Kitchen	6'11" x 13'7"	85 sq. ft	Yes
9	Garage	23'5" x 22'10"	535 sq. ft	No
10	Living Room	18'3" x 13'7"	248 sq. ft	Yes
11	Primary Bedroom	12'8" x 13'6"	172 sq. ft	Yes
12	Bath	5'1" x 7'8"	39 sq. ft	Yes
13	Bedroom	9'4" x 13'7"	127 sq. ft	Yes
14	Dining Area	10'5" x 13'7"	119 sq. ft	Yes
15	Hall	6'3" x 3'1"	18 sq. ft	Yes

**68846 Claire Street, Edwardsburg, Cass County,
Michigan, United States, 49112**

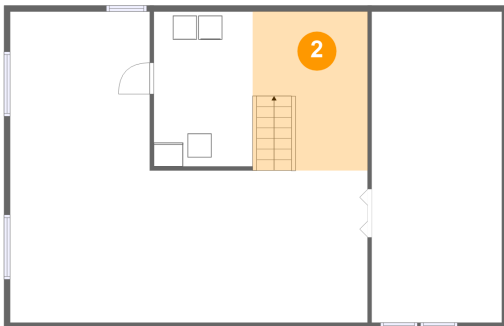
1 Floor 1 - Exercise Room



Dimensions: 10'11" x 26'1"
Area: 286 sq. ft
Counted as living area: No

Heated: Yes
Finished: No
Enclosed: Yes
Contiguous: Yes
Permitted: Yes
Wet space: No
Addition: No
Conversion: No

2 Floor 1 - Storage

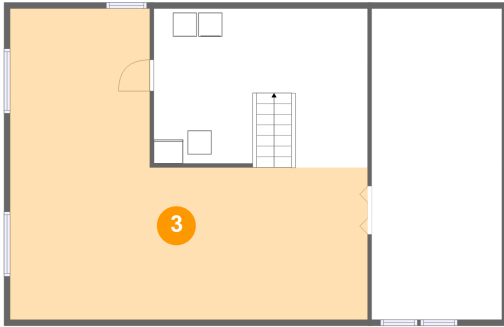


Dimensions: 9'8" x 13'4"
Area: 129 sq. ft
Counted as living area: No

Heated: No
Finished: No
Enclosed: No
Contiguous: Yes
Permitted: Yes
Wet space: No
Addition: No
Conversion: No

**68846 Claire Street, Edwardsburg, Cass County,
Michigan, United States, 49112**

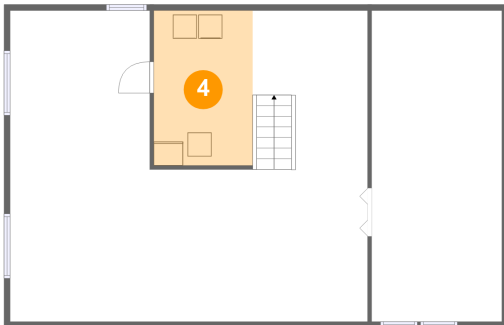
3 Floor 1 - Recreation Room



Dimensions: 30'1" x 26'2"
Area: 541 sq. ft
Counted as living area: No

Heated: Yes
Finished: Yes
Enclosed: Yes
Contiguous: No
Permitted: Yes
Wet space: No
Addition: No
Conversion: No

4 Floor 1 - Utility



Dimensions: 8'4" x 13'0"
Area: 108 sq. ft
Counted as living area: No

Heated: Yes
Finished: No
Enclosed: Yes
Contiguous: Yes
Permitted: Yes
Wet space: No
Addition: No
Conversion: No

5 Floor 2 - Bedroom



Dimensions: 10'7" x 10'4"
Area: 109 sq. ft
Counted as living area: Yes

Heated: Yes
Finished: Yes
Enclosed: Yes
Contiguous: Yes
Permitted: Yes
Wet space: No
Addition: No
Conversion: No

**68846 Claire Street, Edwardsburg, Cass County,
Michigan, United States, 49112**

6 Floor 2 - Hall



Dimensions: 13'4" x 2'11"
Area: 39 sq. ft
Counted as living area: Yes

Heated: Yes
Finished: Yes
Enclosed: Yes
Contiguous: Yes
Permitted: Yes
Wet space: No
Addition: No
Conversion: No

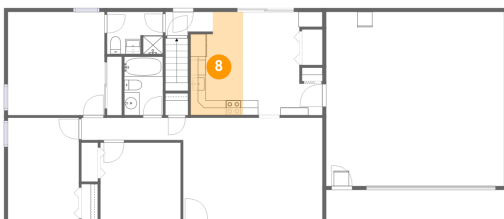
7 Floor 2 - Bath



Dimensions: 7'4" x 5'7"
Area: 40 sq. ft
Counted as living area: Yes

Heated: Yes
Finished: Yes
Enclosed: Yes
Contiguous: Yes
Permitted: Yes
Wet space: Yes
Addition: No
Conversion: No

8 Floor 2 - Kitchen



Dimensions: 6'11" x 13'7"
Area: 85 sq. ft
Counted as living area: Yes

Heated: Yes
Finished: Yes
Enclosed: Yes
Contiguous: Yes
Permitted: Yes
Wet space: No
Addition: No
Conversion: No

**68846 Claire Street, Edwardsburg, Cass County,
Michigan, United States, 49112**

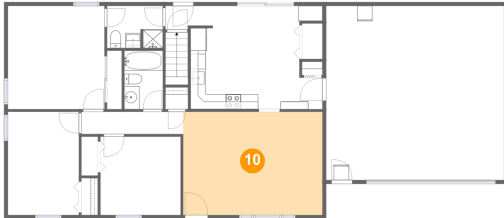
9 Floor 2 - Garage



Dimensions: 23'5" x 22'10"
Area: 535 sq. ft
Counted as living area: No

Heated: No
Finished: No
Enclosed: Yes
Contiguous: Yes
Permitted: Yes
Wet space: No
Addition: No
Conversion: No

10 Floor 2 - Living Room



Dimensions: 18'3" x 13'7"
Area: 248 sq. ft
Counted as living area: Yes

Heated: Yes
Finished: Yes
Enclosed: Yes
Contiguous: Yes
Permitted: Yes
Wet space: No
Addition: No
Conversion: No

11 Floor 2 - Primary Bedroom



Dimensions: 12'8" x 13'6"
Area: 172 sq. ft
Counted as living area: Yes

Heated: Yes
Finished: Yes
Enclosed: Yes
Contiguous: Yes
Permitted: Yes
Wet space: No
Addition: No
Conversion: No

**68846 Claire Street, Edwardsburg, Cass County,
Michigan, United States, 49112**

12 Floor 2 - Bath



Dimensions: 5'1" x 7'8"
Area: 39 sq. ft
Counted as living area: Yes

Heated: Yes
Finished: Yes
Enclosed: Yes
Contiguous: Yes
Permitted: Yes
Wet space: Yes
Addition: No
Conversion: No

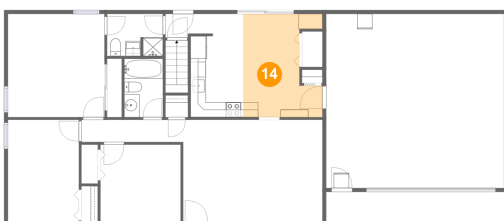
13 Floor 2 - Bedroom



Dimensions: 9'4" x 13'7"
Area: 127 sq. ft
Counted as living area: Yes

Heated: Yes
Finished: Yes
Enclosed: Yes
Contiguous: Yes
Permitted: Yes
Wet space: No
Addition: No
Conversion: No

14 Floor 2 - Dining Area

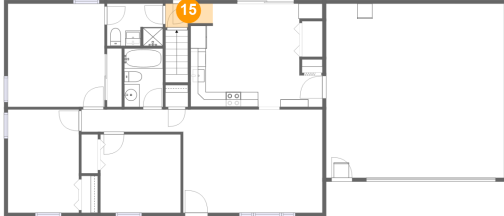


Dimensions: 10'5" x 13'7"
Area: 119 sq. ft
Counted as living area: Yes

Heated: Yes
Finished: Yes
Enclosed: Yes
Contiguous: Yes
Permitted: Yes
Wet space: No
Addition: No
Conversion: No

**68846 Claire Street, Edwardsburg, Cass County,
Michigan, United States, 49112**

15 Floor 2 - Hall



Dimensions: 6'3" x 3'1"
Area: 18 sq. ft
Counted as living area: Yes

Heated: Yes
Finished: Yes
Enclosed: Yes
Contiguous: Yes
Permitted: Yes
Wet space: No
Addition: No
Conversion: No